

# BRICK and TILE





WICHITA MUNICIPAL AIRPORT

WICHITA, KANSAS

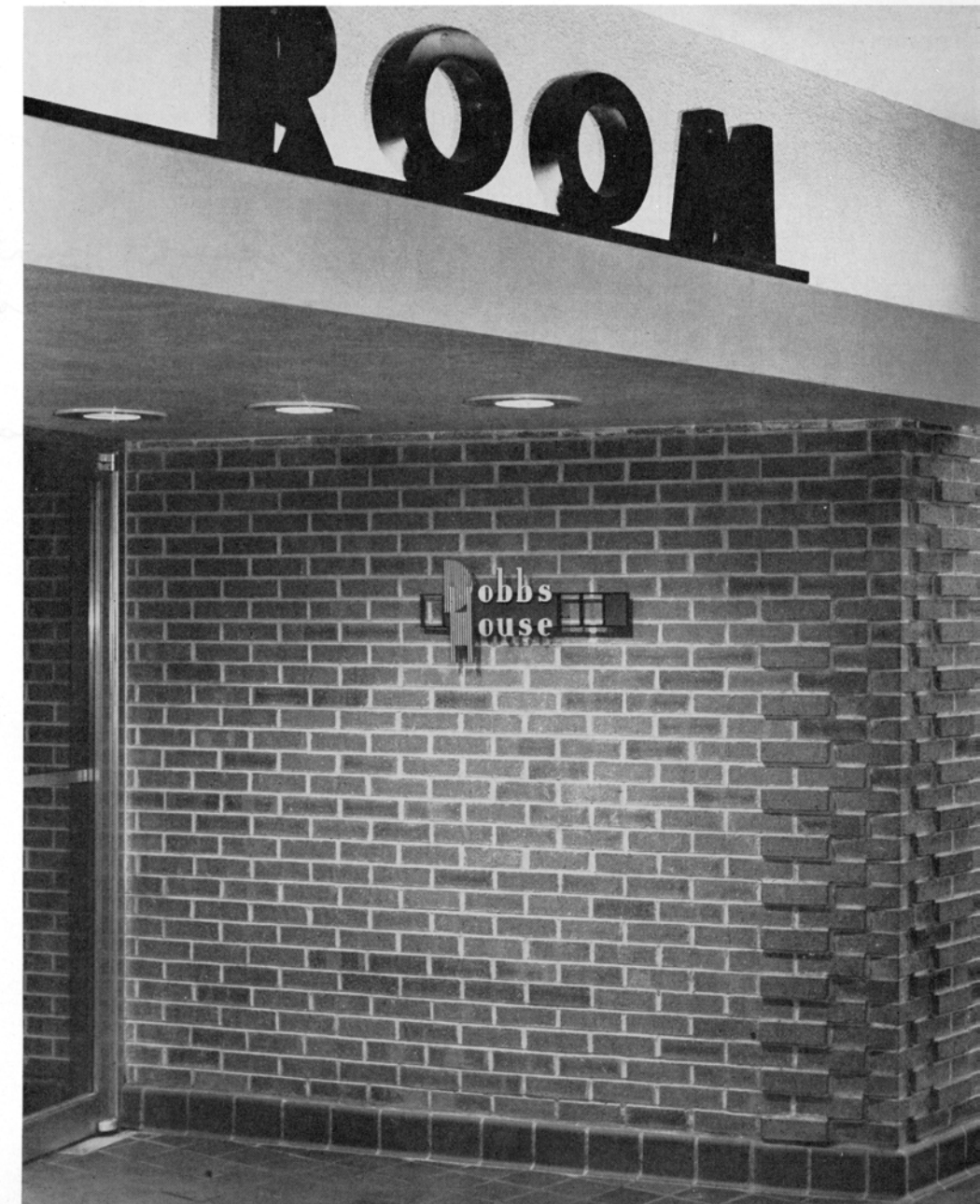
*Thomas and Harris, Architects*



Control tower with adhesion-type ceramic veneer spandrels in combination with brick, viewed from enclosed garden area flanking observation deck.

Detail of exposed interior brick masonry at entrance to airport dining room. Note handling of projecting units at corner.

Acrosspage: Detail of main entrance with control tower beyond. Large units of adhesion-type ceramic veneer contrast with red brickwork of exterior.







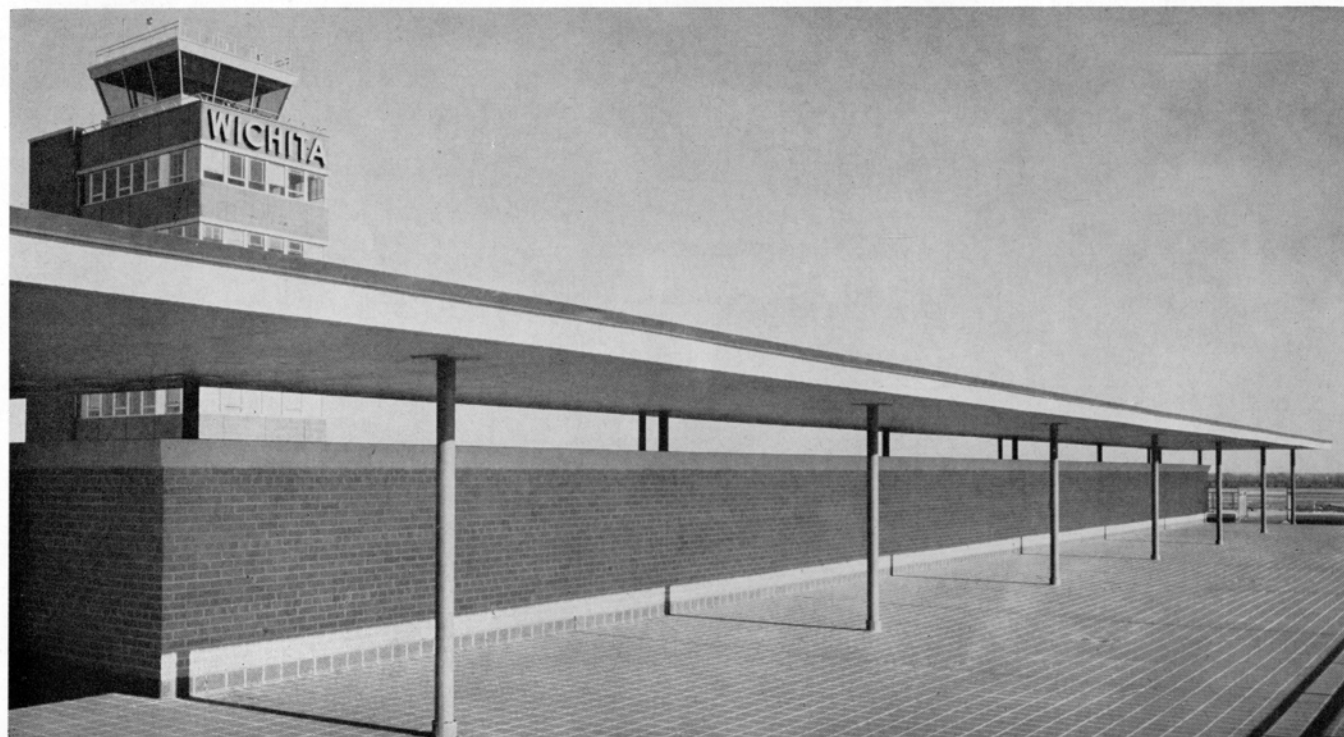
Interior view shows wide use of clay masonry in entrance lobby of brick and ceramic veneer, glazed structural facing tile interior of kitchen and the exposed interior brick masonry of the airport restaurant.







Walls flanking escalator leading from main lobby to concourse are of ceramic veneer also. View of covered observation deck illustrates the use of brick, as does the exterior partition wall shown below which separates pedestrian and parking areas.



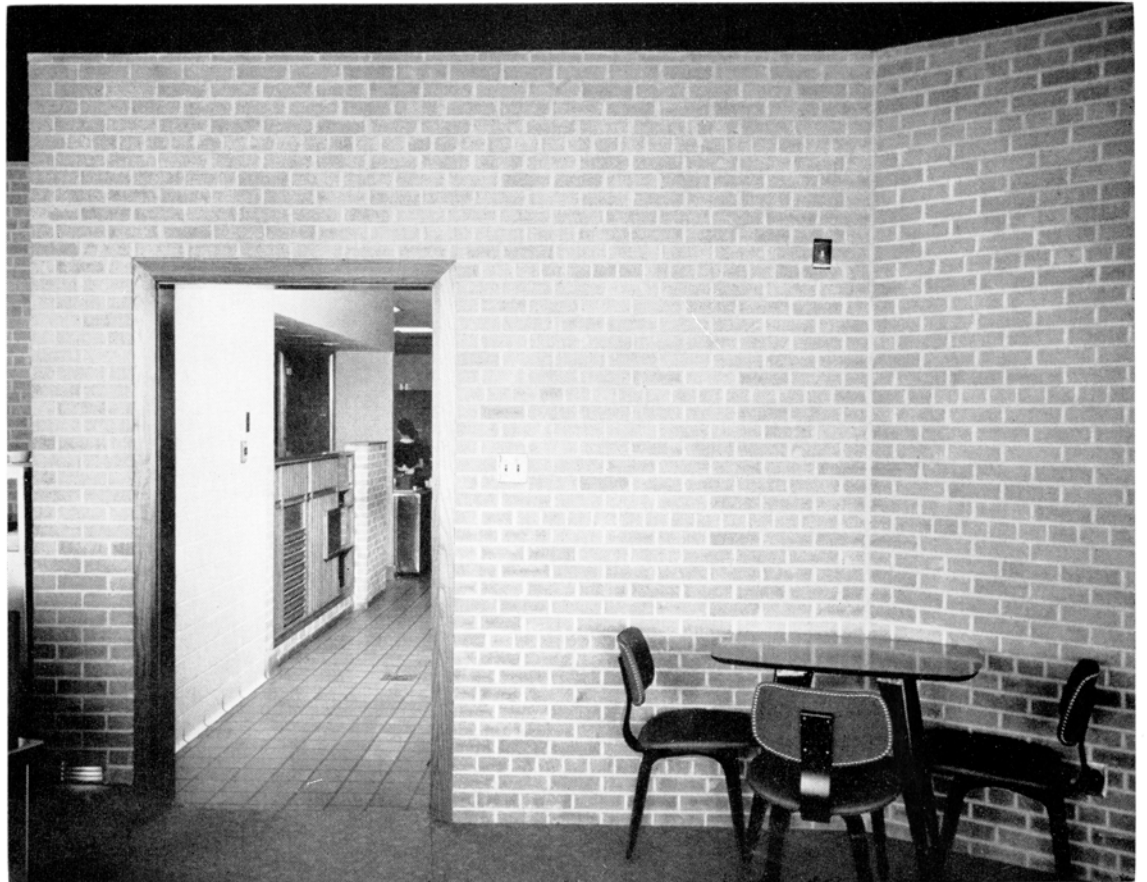


VOL. 12

NO. 12

DECEMBER,

1955



Entrance to kitchen from dining room.

## CLAY PRODUCTS ASSOCIATION OF KANSAS

111 SOUTH HYDRAULIC

•

WICHITA 8, KANSAS