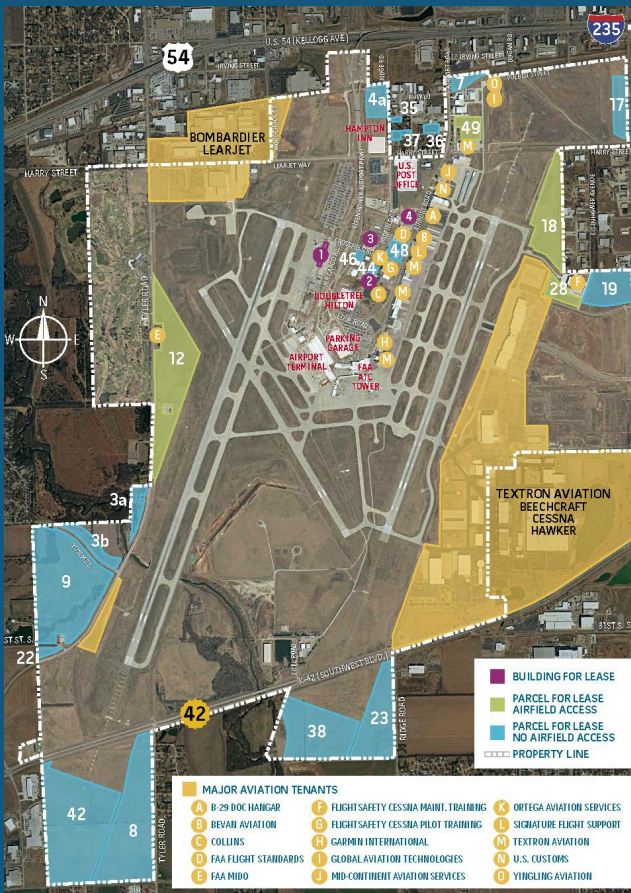


LAND YOUR BUSINESS IN THE AIR CAPITAL OF THE WORLD



**507 ACRES ARE AVAILABLE
FOR DEVELOPMENT**

By taking residence in Eisenhower National's aerospace industrial campus, you will join world-class aviation tenants such as Textron Aviation, Bombardier's U.S. Headquarters, Rockwell Collins, and more.

As the State's largest airport, ICT a small hub air carrier and general aviation complex, providing accommodations for all aircraft, as well as the latest innovations in passenger convenience, safety and efficiency. Located 5.2 miles southwest of Wichita's central business district, it is bordered by U.S. Highway 54/500, Highway K-42, and has easy access to I-235.

SPECIFICATIONS - ICT

- Served by 6 airlines, 14 nonstop destinations, 5 cargo operators
- 3 runways: 10302 ft x 150 ft; 7302 ft x 150 ft, 6301 ft x 150 ft
- 5 precision instrument approaches
- 2 fixed-base operators

ADVANTAGES

The Wichita Airport Authority leases land and improvements on a long-term basis to tenants who receive these potential benefits from the Authority's tax-exempt status, including the following:

- No general property taxes payable on the land owned by the Authority
- No general property taxes payable on improvements owned by the Authority
- Improvements can be financed with municipal bonds at tax-exempt rates of interest
- Sales tax exemption for development on airport property.